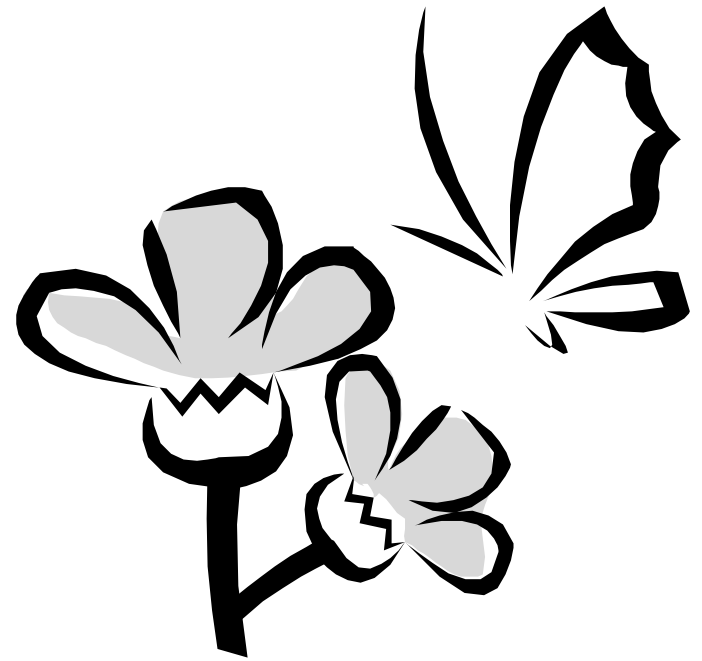





Amazing Leps

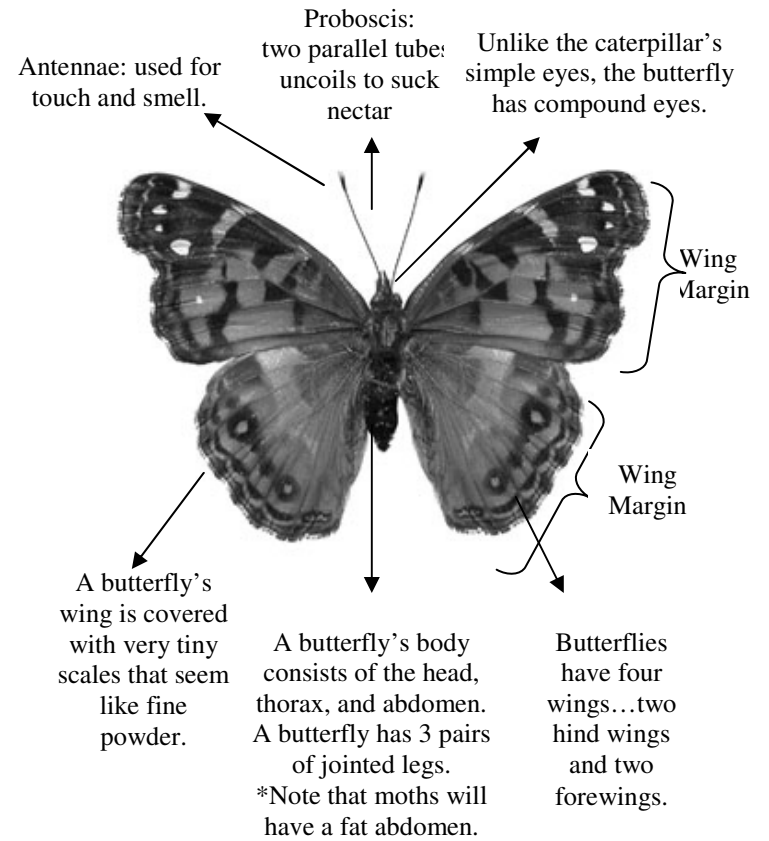


Keciro Homeschool
2005

Lepidoptera

Shape	Size	Color	Antenne	Tails
General outline shape...smooth, frilled, elongated wings... 	HUGE, TINY, In-Between	Red, Yellow, White... Underside Wing Color	Moth: Shaped like feather and tapers to point. Butterfly: Thick at their extremity, ending in a blunt club-shape. Skipper: Hooked-tip antennae.	Do the hind wings have tails as with the swallowtail? 

Wing Span	Flight Style	Wing Position While Resting	Marking	Wing Margins
Estimate average wing-span. 	Does it glide, dart, flap, soar...	Open or Closed	Spots, bold pattern, stripes, plain, checkered...	Is their arrow row of spots along the margin of the wings?



Comparing Butterflies and Moths

Characteristic	Butterfly	Moth
Antennae	Thick at their extremity, ending in a blunt club-shape.	Shaped like feather and tapers to point.
Color	Bright and Bold	Usually Less Bright
Resting Position of Wing	Closed, except when basking in the sun.	Open
Period of Activity	Diurnal, active during the day or crepuscular, active at dawn and dusk.	Nocturnal, active at night.
Pupa	Chrysalis	Pupa enclosed in a cocoon.
Body	Slender and Smooth	Fat and Hairy
Wing Morphology	Forewings and hind wings independent.	Forewings and hind wings connected.